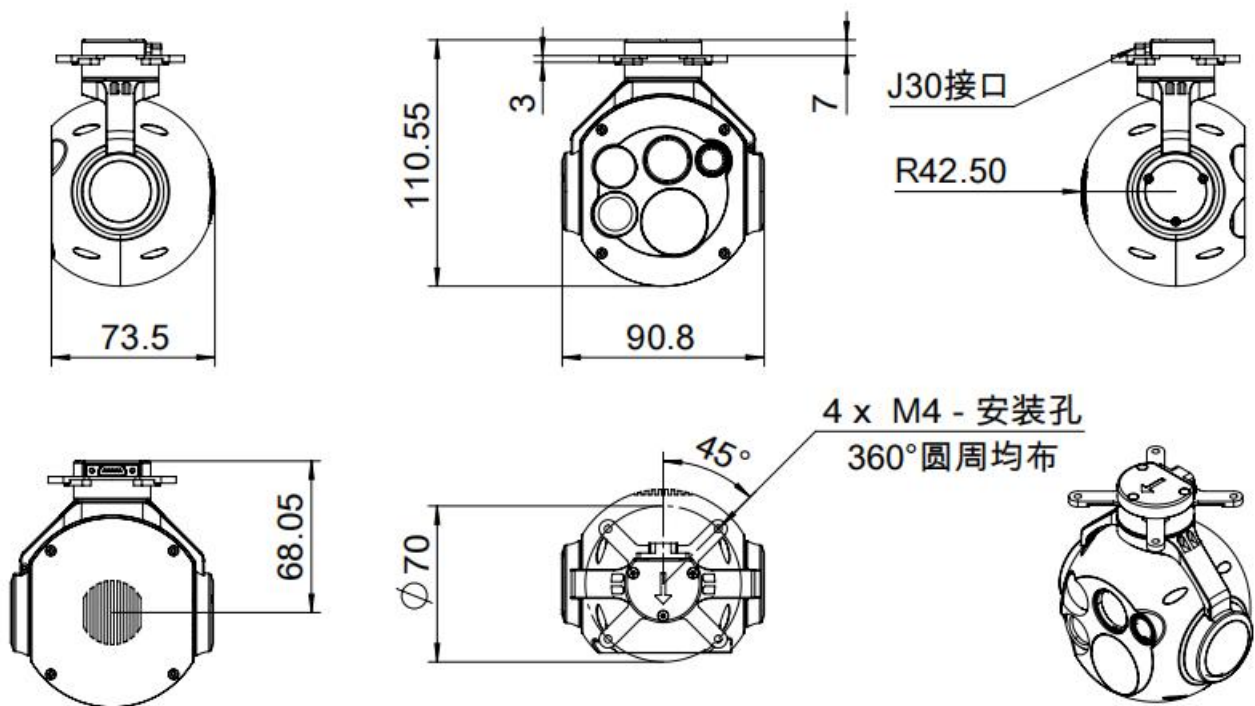


Product highlights:

1. 7.2/25mm prime lens EO+ 24mm prime lens IR+3km Laser Ranging
2. Tracking function
3. 12~28V power input
4. Ethernet video output
5. Small size, low power consumption

Dimensions



S2IVR-01

Parameters

MODEL		S2IVR-01	S2IVR-02	S2IVR-03
System specification	System type	Gyro stability		
	Weight	410g		510g
Stable system	Platform type	Two axle		Tri axis
	Azimuth	-110° ~+110°		N×360°
	pitch	-100° ~+30°		
	Maximum search angular velocity	≥100° /s		
	Stability accuracy	0.1mrad(1° /2HZ)		
	Angular position accuracy	≤0.3°		
Visible light camera	Resolution and frame rate	1920×1080 @60fps		
	BIG FOV	42°×24.5°(7.2mm)		
	SMALL FOV	12.7° ×7° (25mm)		
Infrared camera	Resolution and frame rate	640×480@60fps		
	FOV	18.1° ×13.6° (24mm prime lens)		
Ranging	Laser Ranging	Range≥3km; Accuracy±1m		
Tracking module	Frame rate	60Hz		
	Tracking speed	±48 Pixel/frame		
System external interface	Control	RS232		
	Video output	NET		
Power supply	Power	12~28V		
	Power consumption	Av≤15W, Max≤30W		
Environmental conditions	Operating temperature	-40°C ~+60°C		-20°C ~+60°C
	Storage temperature	-50°C ~+70°C		
	shock resistance	≥400g		